

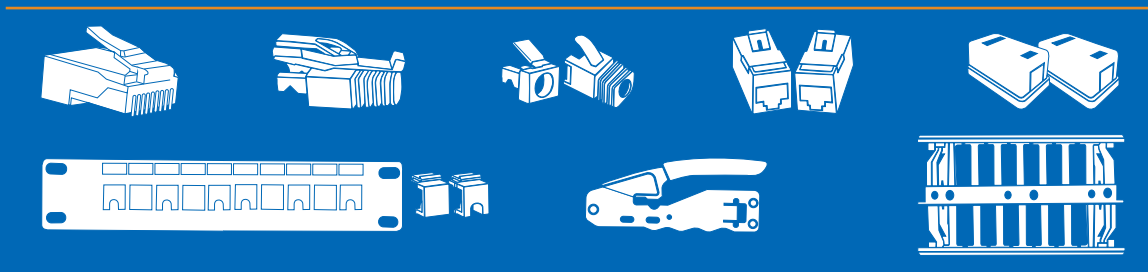


## **Tested. Trusted. Technical.**

T3 Innovation is a leader in RJ45 connectors and cabling solutions. With extensive expertise and a genuine passion for our craft, we deliver products that truly perform. Our quality and performance are supported by robust evidence, ensuring reliability in every installation.

# CAT6A

2 0 2 6



 **FLUKE** device Tested

  **RoHS** 

[www.t3inno.com](http://www.t3inno.com)

© 2026 T3 Innovation. All rights reserved.

# Hand Tool

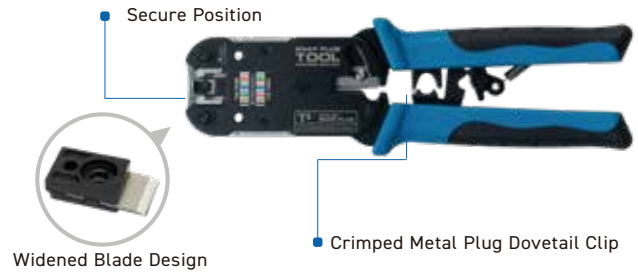
**SNAP PLUG™  
TOOL**

P/N : T10710-EX

## Professional Heavy Duty Crimper

### For RJ45 Modular Plugs

- Crimp both Shielded & Unshielded RJ45 plugs
- Crimp and Trim in one motion
- Built-in cable cutter and stripper



**SNAP PLUG™  
TOOL**

P/N : T10610 / T10610-10P

## Professional Compact Crimp Tool

### For RJ45 Modular Plugs

- Crimp both Shielded & Unshielded RJ45 plugs
- Crimp and Trim in one motion
- Built-in lock keeps tool closed when not in use



**TOOL**

## Keystone Jack Termination Tool

### For Keystone Jack

- Terminates and cuts all 8 conductors at a time
- Dramatically reduce termination time
- Simple, one handed operation

**Snap-Term**



P/N : T50310

Notes : Compatible with T3 90D Keystone Jack



**SNAP PLUG™**

P/N : TPSR-B60-100AP / TPSR-B73-100AP

## Strain Relief/ Snagless Boot

### for SNAP PLUG Cat6a/Cat6/Cat5e plugs

B60

B73

Max LAN Cable OD  
6.0 mm

Max LAN Cable OD  
7.3mm

Shielded

Unshielded



**SNAP LOCK™**

Optional : Compatible with locking pin



**SNAP PLUG™**

P/N : SPC5-UTP-S100J-SR55

P/N : SPC6-UTP-S100J-SR65

P/N : SPC6-UTP-M100J-SR73

## RJ45 Connectors/Boots /Copper Strips\*

**Combo Jar**

P/N : SP-STP-S50J-SR65

P/N : SP-STP-M50J-SR73

P/N : SP-STP-135X30J-SR85



# RJ45 Connector(UTP)



Commercial



Residential



All-in-One



Made in Taiwan

**NON-PASS THROUGH**

P/N : MPC6-UTP-50AP / MPC6-UTP-100AP

## Cat6A/6 UTP Standard RJ45 Modular Plug

HI/LO STAGGER



DATASHEET



Max LAN Cable OD  
7.0 mm

CONDUCTOR ID  
MAX1.15 mm

23 AWG SOLID OR STRANDED

Unshielded

**SNAP PLUG™**

P/N : SPC6-UTP-M50AP / SPC6-UTP-M100AP

## Cat6A/6 UTP Pass Through RJ45 Modular Plug

HI/LO STAGGER



DATASHEET



Max LAN Cable OD  
7.0 mm

CONDUCTOR ID  
1.10 - 1.15 mm

23 AWG SOLID OR STRANDED

Unshielded

# RJ45 Connector (STP)

SNAP PLUG™

P/N : SP-STP-M50AP / SP-STP-M100AP

## Cat6A/6 STP

Pass Through RJ45 Modular Plug

HI/LO STAGGER



Internal Ground



DATASHEET



Max LAN Cable OD  
7.0 mm

CONDUCTOR ID  
1.1 - 1.15 mm

23 AWG SOLID OR STRANDED

Shielded

SNAP PLUG™

P/N : SP-STP-L50AP / SP-STP-L100AP

## Cat6A STP

Pass Through RJ45 Modular Plug

HI/LO STAGGER



Internal Ground



DATASHEET



Max LAN Cable OD  
7.0 mm

CONDUCTOR ID  
MAX 1.2 mm

23 AWG SOLID OR STRANDED

Shielded

SNAP PLUG™

P/N : SP-STP-12X-50AP / SP-STP-12X-100AP

## Cat6A/6 STP

Pass Through RJ45 Modular Plug

HI/LO STAGGER



External Ground



DATASHEET



Max LAN Cable OD  
8.5 mm

CONDUCTOR ID  
1.15 - 1.2 mm

23 AWG SOLID OR STRANDED

Shielded

SNAP PLUG™

P/N : SP-STP-135X-50AP / SP-STP-135X-100AP

## Cat6A XL STP

Pass Through RJ45 Modular Plug

HI/LO STAGGER



External Ground

Large Conductor



DATASHEET



Max LAN Cable OD  
8.5 mm

CONDUCTOR ID  
1.35mm/0.053"

22 AWG SOLID OR STRANDED

Shielded



# Lan Cable



Ultra Slim 28AWG

P/N : Cat6A-28UTP-LPCORD\_BL/WT/\*\*M

## Cat6A U/UTP Stranded Patch cord with Locking Pin

- TIA Category : Cat6A (Compatible with Cat6 / Cat5e)
- Supported Data Rate  $\geq$  / 10 Gbps (Gigabit ethernet)
- Supported Bandwidth  $\geq$  500 MHz



Blue / Grey Options

15cm	20cm	30cm	50cm
1M	2M	3M	5M



DATASHEET



Ultra Slim 28AWG

P/N : Cat6A-28SH-LPCORD\_BL/WT/\*\*M

## Cat6A U/FTP Stranded Patch cord with Locking Pin

- TIA Category : Cat6A (Compatible with Cat6 / Cat5e)
- Supported Data Rate  $\geq$  / 10 Gbps (Gigabit ethernet)
- Supported Bandwidth  $\geq$  500 MHz



Blue / Grey Options

20cm	30cm	50cm	
1M	2M	3M	5M



DATASHEET



## Cat6 & Cat6A U/UTP 23AWG bulk cable

305M, PVC, CM Rated, UL, ETL, ROHS



RoHS ETL TAA



MADE IN TAIWAN

UNSHIELDED

P/N : C6-23UTP-CM\*\*\*-305M

Cat6

Cat6A



New

DATASHEET



# Keystone Jack

## Inline Coupler Keystone Jack

- ISO/IEC 11801, ANSI-TIA/EIA-568.2-D
- ETL Verified / FORCE POE Verified / UL Listed
- Support 30-90M Fluke Link Test
- Compact size for high density application
- Compatible with most unloaded patch panel and wall plate

P/N : CPLRKJ-C6UTP-BK-1AP  
P/N : CPLRKJ-C6UTP-WH-1AP

UTP-Cat6 / 5e



P/N : CPLRKJ-C6STP-1AP  
P/N : CPLRKJ-C6ASTP-1AP

STP-Cat6

STP-Cat6A



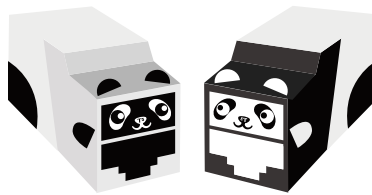
## 180° Keystone Jack Component Rated

- Built-in Dust cover (Spring loaded)
- 5 color ID bars included with each Keystone Jack
- Component Rated, Connecting Hardware standard Cat6 / 5e
- ISO/IEC 11801, ANSI-TIA/EIA-568.2-D
- Support 4PPoE, PoE++ Verified
- Available in Cat6A / Cat6 / Cat5e UTP



## 180° Toolless Keystone Jack Component Rated

- 5 color ID bars included with each Keystone Jack
- Component Rated, Connecting Hardware standard Cat6 / 5e
- ISO/IEC 11801, ANSI-TIA/EIA-568.2-D
- Support 4PPoE, PoE++ Verified
- Available in Cat6A / Cat6 / Cat5e UTP and STP



P/N : TLKJ-C6AUTP-5CBK-1AP  
P/N : TLKJ-C6AUTP-5CWH-1AP  
P/N : TLKJ-C6ASTP-5C-1AP

Cable Tie



UTP

STP



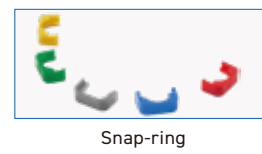
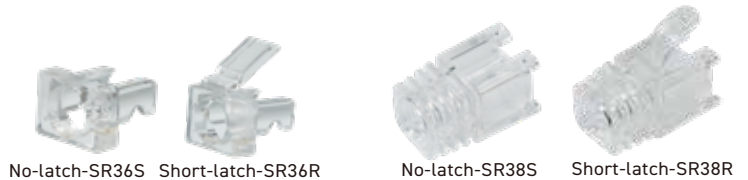
## Strain Relief/Boots

SHORT BODY

LONG BODY

SNAGLESS

- Available in multiple configurations—including ultra-short body, long body, and snagless designs—our boots are built for versatility
- We also offer optional color clips to enhance and streamline your color management system



## HDMI Keystone Jack

- Available in 90° or 180°
- HDMI female to female adapter, H.D. version
- Support HDMI 2.0 or HDMI 2.1 with total cabling length <5M

90°



180°



# Patch Panel

CE RoHS

## 8 PORT UTP KEYSTONE PATCH PANEL

COMPACT SIZE

UNSHIELDED

UNLOADED



Compatible Screw Included

P/N : PNL-UTP-UN8P-COMPACT



CE RoHS

## 12 PORT KEYSTONE PATCH PANEL

ROTATABLE MODULE

UNSHIELDED

UNLOADED



Label Stickers

P/N : PNL-UTP-UN12P-ANGL



CE RoHS

## 24 PORT UTP KEYSTONE PATCH PANEL

STAGGERED

10G NETWORKS

UNSHIELDED

UNLOADED

P/N : PNL-UTP-UN24P-1U-STAGGER



CE RoHS

## 24 PORT KEYSTONE PATCH PANEL

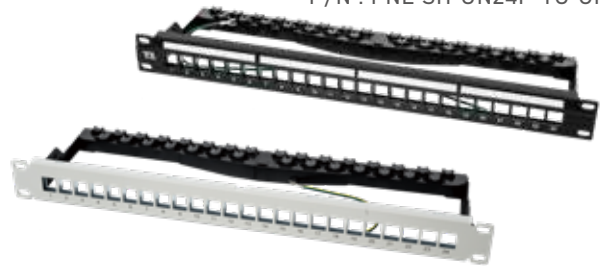
SHIELDED

UNLOADED

GRAY

P/N : PNL-SH-UN24P-1U

P/N : PNL-SH-UN24P-1U-GRAY



CE RoHS

## 24 PORT UTP KEYSTONE PATCH PANEL

FRONT LOAD

UNSHIELDED

UNLOADED

P/N : PNL-UTP-UN24P-1U-FRONT



CE RoHS

## 24 PORT CAT6 UTP PATCH PANEL

UNSHIELDED

LOADED

P/N : PNL-UTP-C624P-1U



# Cable Management

CE RoHS

## Keystone Insert block



CABLE FEED THROUGH



BLANK COVER



DATASHEET



CE RoHS

## Cable Management Rail-1U-24Slot

1U



P/N : PNL-MANAGER-1U-24SLOT

DATASHEET



CE RoHS

## Cable Management Brush/Blank

BRUSH

BLANK



P/N : PNL-MANAGER-1U-BRUSH

P/N : PNL-MANAGER-1U-BLANK

DATASHEET



CE RoHS

## Cable Management 1U 19-inch D Ring

D RING



P/N : PNL-MANAGER-1U-RING

DATASHEET



CE RoHS

## Rack Mount 19" Cable Manager Series

UNSHIELDED

UNLOADED



- Available in 1U / 2U
- Single side / Double side
- Standard capacity / High capacity

1U



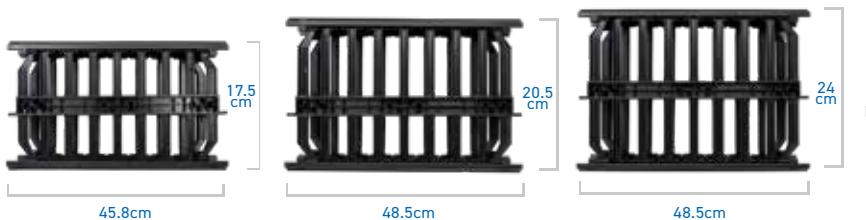
2U



Standard

Capacity

High



- Optional : Single side / Double side

DATASHEET

