

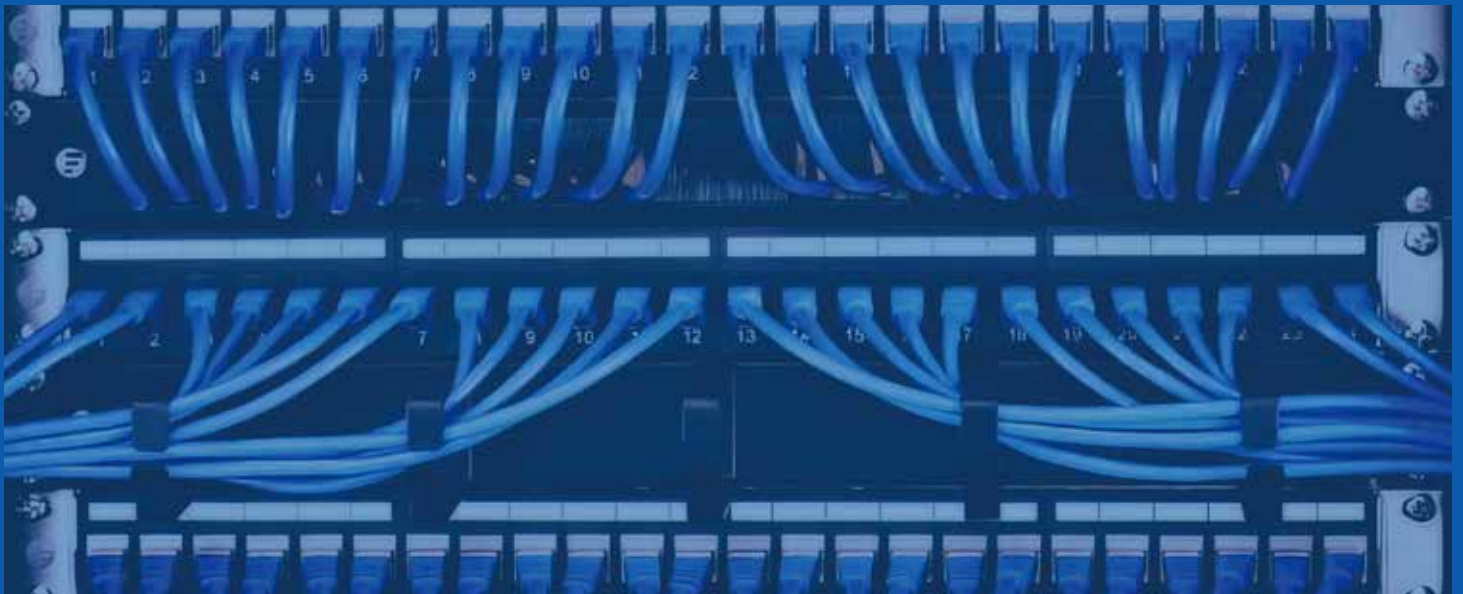


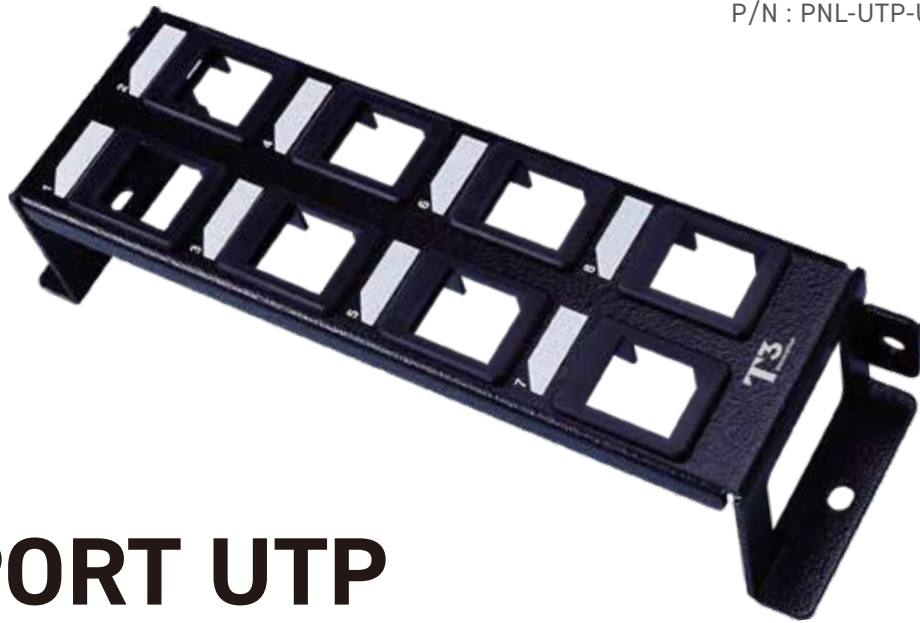
Tested. Trusted. Technical.

T3 Innovation is a leader in RJ45 connectors and cabling solutions. With extensive expertise and a genuine passion for our craft, we deliver products that truly perform. Our quality and performance are supported by robust evidence, ensuring reliability in every installation.

PATCH PANELS

2 0 2 5 CATALOG





8 PORT UTP KEYSTONE PATCH PANEL

COMPACT SIZE



UNSHIELDED

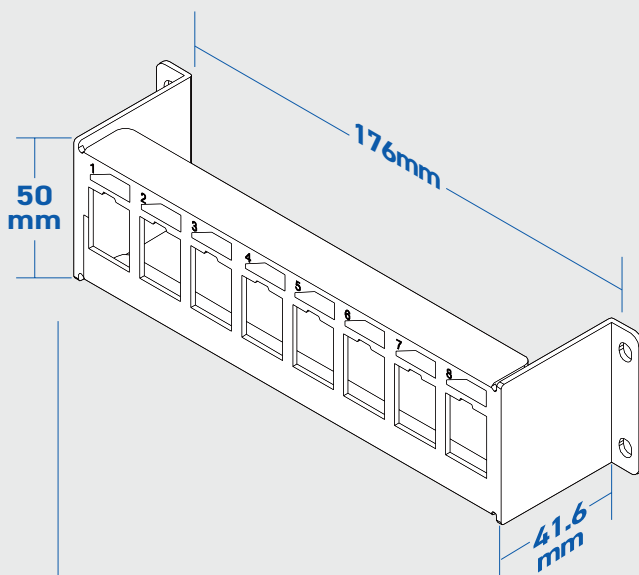


UNLOADED

DATASHEET



Product Features



- Compact, modular, and easy to adjust. Designed for seamless integration and quick setup



- Compatible Screw Included



- For Unshielded Keystones and A/V Couplers
- Full Metal Construction (SPCC)
- Wall Mount Style
- Meet and Exceed ANSI/TIA 568.2-D Standard

12 PORT KEYSTONE PATCH PANEL

ROTATABLE MODULE



UNSHIELDED

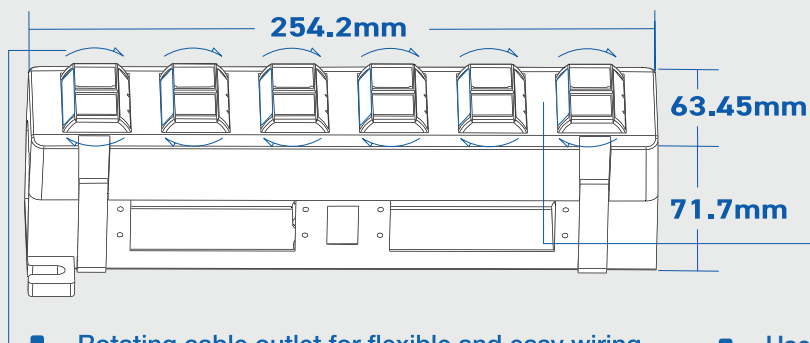


UNLOADED

DATASHEET



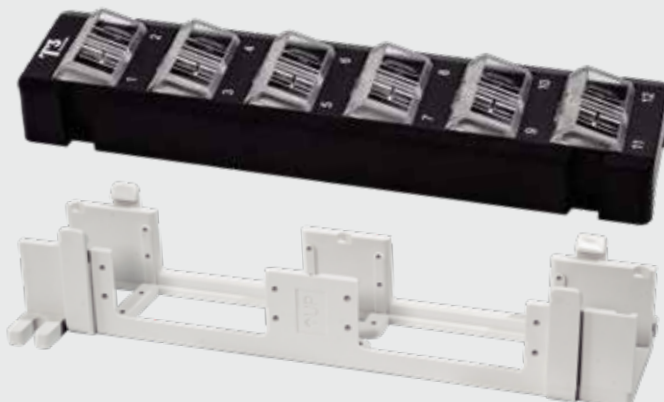
Product Features



**Label
Stickers**

■ Rotating cable outlet for flexible and easy wiring

■ User Manual & Label Stickers Included



■ Wall Mount Bracket

■ For Unshielded Keystones and A/V Couplers

■ Meet and Exceed ANSI/TIA 568.2-D Standard



24 PORT UTP KEYSTONE PATCH PANEL

DATASHEET

**FRONT LOAD****UNSHIELDED****UNLOADED**

Product Features



- Front Loading Modular System
- Detachable Labels
- For Unshielded Keystones



- Screw Cover for Cleaner Looks



- Cable Manager : Built in Cable-clips



- Rear Cable Management Included
- 1RU, Mounts to Any 19-inch Rack, Cabinet, or Wall Bracket



- Hardwares Included

- Meet and Exceed ANSI/TIA 568.2-D Standard

P-p3



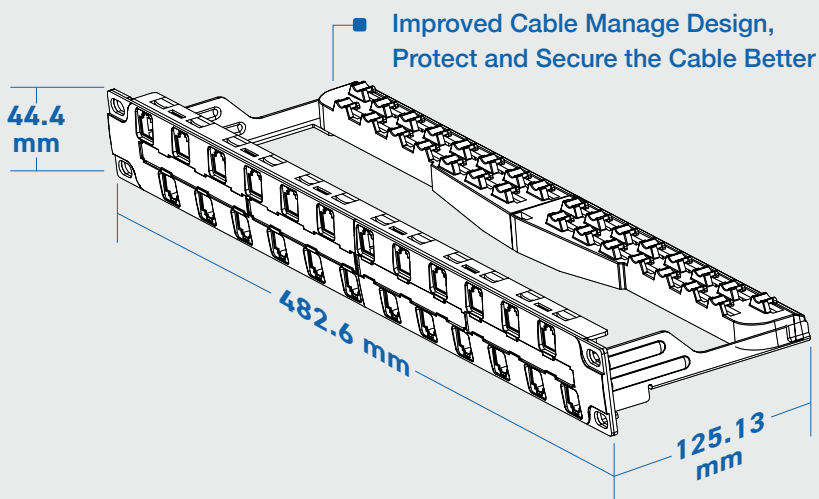
24 PORT UTP KEYSTONE PATCH PANEL

STAGGERED
10G NETWORKS

UNSHIELDED

UNLOADED
DATASHEET


Product Features



- **Reduce Alien Crosstalk**
- 1RU, Mounts to Any 19-inch Rack, Cabinet, or Wall Bracket
- For unshielded keystones
- Good for Cat6A Unshielded System / 10G Networks



- Detachable Labels



- Foldable Cable Manager
- Cable Ties Inculded

- Meet and Exceed ANSI/ TIA 568.2-D Standard



24 PORT KEYSTONE PATCH PANEL

**SHIELDED****UNLOADED**

DATASHEET



Product Features



- Detachable Labels



- Improved Cable Manager Design, Protect and Secure the Cable Better



- Detachable Ground Wire



- For Shielded Keystones
- Compatible with Unshielded Keystones and A/V Couplers



- *Foldable Cable Manager*

- User Manual and Cable Ties Included
- EMI / RFI / ESD Protection
- 1RU, Mounts to Any 19-inch Rack, Cabinet, or Wall Bracket
- Meet and Exceed ANSI/TIA 568.2-D Standard

P-p5



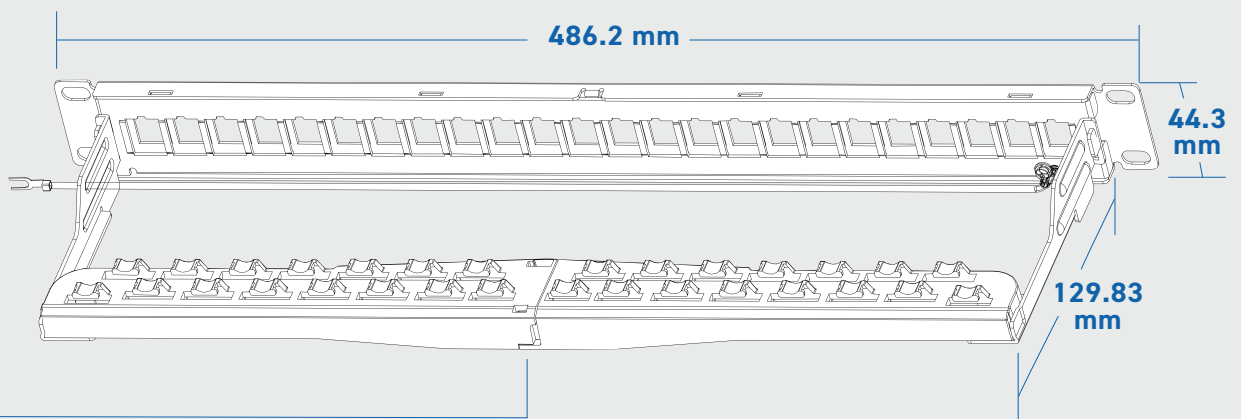
24 PORT UTP KEYSTONE PATCH PANEL

DATASHEET



 **SHIELDED**  **UNLOADED** **GRAY**

Product Features



- Foldable Cable Manager
- For Shielded Keystone
- 1RU, Mounts to Any 19-inch Rack, Cabinet, or Wall Bracket
- Compatible with Unshielded Keystone and A/V Couplers
- EMI / RFI / ESD Protection
- Meet and Exceed ANSI/TIA 568.2-D standard

P-p6



24 PORT CAT6 UTP PATCH PANEL

UNSHIELDED



LOADED

DATASHEET



Product Features



- **Detachable Dust Cover**
- For Cat6 UTP cables
- 1RU, Mounts to Any 19-inch Rack, Cabinet, or Wall Bracket



- Detachable Labels



- Loaded PCB for Punch Down



- **Foldable Cable Manager**

- User Manual and Cable Ties Included
- IDC compatible for 110 and Krone tools with Color Coded Wiring Labels
- ANSI/TIA 568.2-D standard / ISO/IEC 11801 Class D / PoE IEEE 802.3bt

Tested, Trusted, Technical,