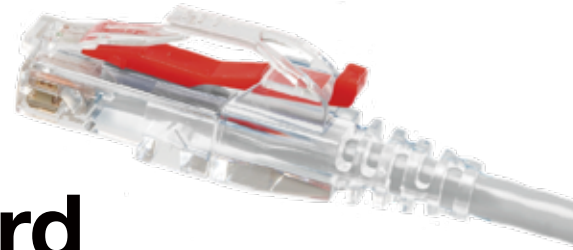


Ultra Slim 28AWG

Cat6A U/UTP

Stranded Patch Cord with Locking Pin



15cm

20cm

30cm

50cm

1M

2M

3M

5M



Features

- TIA Category : Cat6A (Compatible with Cat6 / Cat5e)
- Supported Data Rate \geq / 10 Gbps (Gigabit ethernet)
- Supported Bandwidth \geq 500 MHz
- UL Certified cable. ROHS compliant
- Keyless Locking Pin for easy secure
- Compatibility : 100BASE-TX, 1000BASE-T, 2.5GBASE-T, 5GBASE-T, 10GBASE-T
- Standard Compliance : ANSI/TIA 568.2-D Cat6A & ISO/IEC 11801 Class E
- POE Applications : PoE++(802.3bt) 4PPoE
- 50% the size of the standard 28 AWG patch cords
- Component rated

SNAP LOCK™



FLUKE device Tested

Construction & Material

Conductor: Material / Size Bare copper / 28AWG

Insulation : HDPE(CMI-75E)

Min. Avg. Thickness: 0.14mm

Min. Thickness: 0.11 mm

Color Code:

Pair 1: Blue & White/Blue, Pair 2: Orange & White/Orange

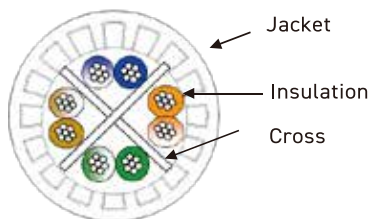
Pair 3: Green & White/Green, Pair 4: Brown & White/Brown

Jacket: 75°C PVC Compound (CMI-80S) compound

Min. Avg. Thickness: 0.585 mm

Min. Thickness: 0.458 mm

Approximate O.D.: 4.6 mm +/- 0.3mm



Electrical & Safety

Characteristic Impedance(Z_0): 85~115 Ω (1~500 MHz)

DC. Resistance Capacitance Unbalance: 5%

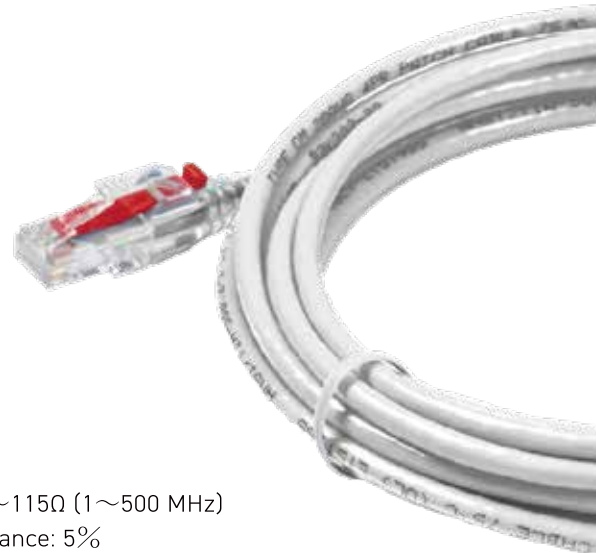
Pair-to-Ground Capacitance Unbalance: 330 pF/100M Max

Conductor Resistance: 22.3 Ω / 100M 20°C Max

Mutual Capacitance: 5600 pF/100m Max

MAXIMUM PULLING TENSION : Max. 85N

MINIMUM BENDING RADIUS \geq 8 TIMES OF OVERALL DIAMETER



Marking on surface of Sheath

TYPE CM 28AWG 4PR PATCH CABLE 75°C (UL) E151955 ANSI/TIA-568.2-D Category 6A U/UTP T3 Innovation BATCH NO.