



# Cat6A/6 UTP

## Pass Through RJ45 Modular Plug

DATASHEET



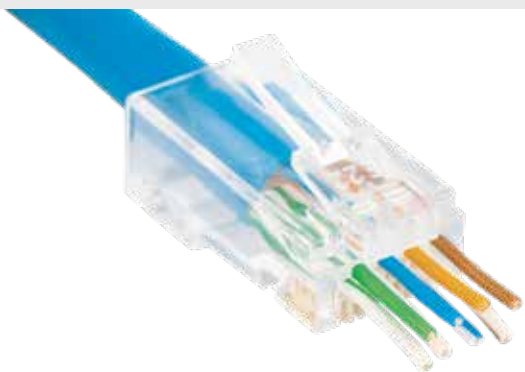
### Features

- Time saving feed through design
- Meets or Exceeds ANSI/TIA568-D.2
- ISO/IEC 11801 Class D ; ANSI/TIA 1096-A ; IEC 60603-7
- Supports POE &POH
- Insertion/Extraction Life : 2000 Minimum Cycles

**HI/LO STAGGER**



<b>Max LAN Cable OD</b> 7.0 mm	<b>CONDUCTOR ID</b> 1.10 - 1.15 mm	<b>23 AWG</b> SOLID OR STRANDED	<b>Unshielded</b>
-----------------------------------	---------------------------------------	---------------------------------	-------------------



### Construction & Material

Plug Material : Polycarbonate, UL94V-2 (Optional : UL94V-0)  
 Contact Pin Type : 3-Prong Pins  
 Contact Material : Phosphor Bronze - .012" thick  
 Contact Plating : 50µ micron thick 24ct Cold plated over 100µ of nickel plating

### Electrical & Safety

Contact Resistance : 20 Milli-Ohms Max  
 Current / Voltage : 30 VAC / 42 VDC at 1.5 Amps  
 Operating Temperature : -40°C to +70°C  
 Fire Safety : UL 94V-2



Packaging Available : 100pc / 500pc / 1,000pc / Custom

C-p5